

MONTHLY MEMBERSHIP PROGRESS REPORT

District 11 E1

Results as of: 4/30/2024

GMT:

LOCATION MICHIGAN

GMT CA

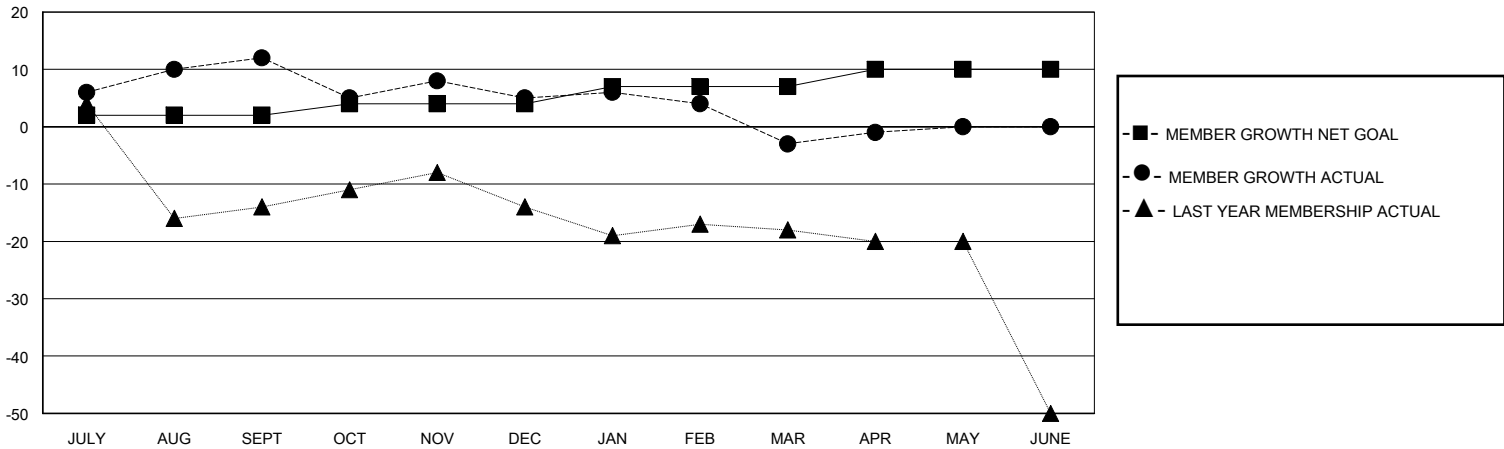
Clubs			
RESULTS FOR 2023-2024			
QUARTER	NEW CLUB GOAL	NEW CLUBS	DROPPED CLUBS
JULY/AUG/SEPT	0	0	0
OCT/NOV/DEC	0	0	0
JAN/FEB/MAR	0	0	0
APR/MAY/JUNE	1	0	0

Members			
RESULTS FOR 2023-2024			
QUARTER	MEMBER GROWTH NET GOAL	MEMBER GROWTH ACTUAL	DROPPED MEMBERS ACTUAL (including transfers)
JULY/AUG/SEPT	2	37	24
OCT/NOV/DEC	2	19	26
JAN/FEB/MAR	3	12	19
APR/MAY/JUNE	3	5	2

GOALS AND ACTUAL NEW CLUBS CUMULATIVE



GOALS AND ACTUAL MEMBERS CUMULATIVE



DROPPED CLUBS: 0	23 CLUBS OF 38 ADDED 1 OR MORE NEW MEMBERS	GENDER DISTRIBUTION
		MALE 569 (63.65%)
		FEMALE 323 (36.13%)
DROPPED MEMBERS	CLICK HERE FOR CUMULATIVE MEMBERSHIP DATA	TOTAL FAMILY UNIT MEMBERS 255
DECEASED 11		FAMILY MEMBERS PAYING HALF DUES 130
CLUB CANCELLED 0		
OTHER 60		
TOTAL 71		